



GAT MONTHLY MEMBERSHIP PROGRESS REPORT

Results as of: 5/31/2024

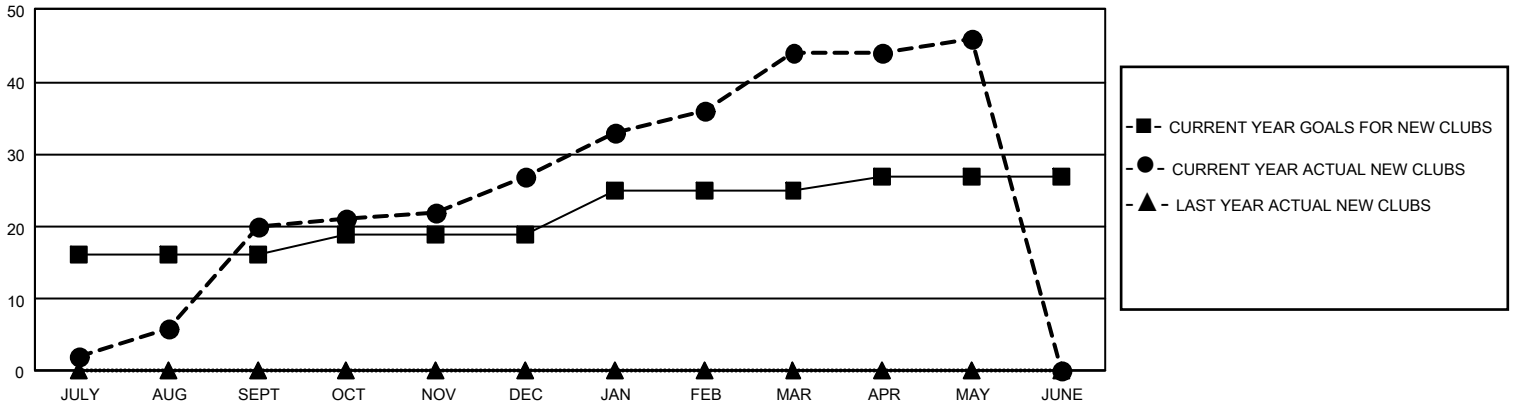
GMT Constitutional Area 5 - M, Group F

REPORT DOES NOT INCLUDE CLUBS IN UNDISTRICTED AREAS.

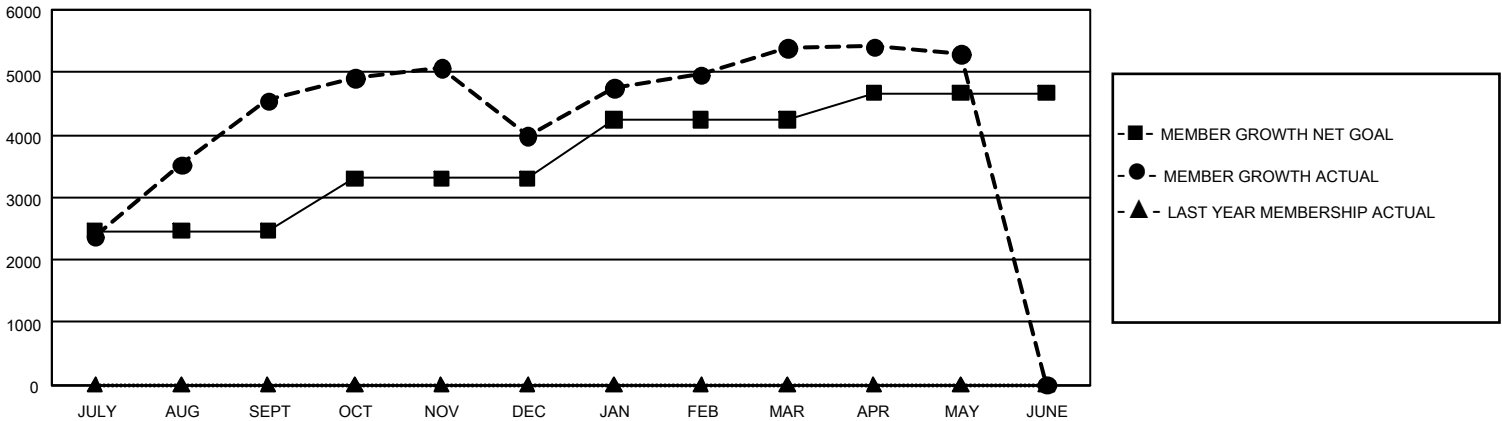
Clubs			
RESULTS FOR 2023-2024			
QUARTER	NEW CLUB GOAL	NEW CLUBS	DROPPED CLUBS
JULY/AUG/SEPT	48	20	3
OCT/NOV/DEC	9	7	5
JAN/FEB/MAR	18	17	1
APR/MAY/JUNE	6	2	6

Members			
RESULTS FOR 2023-2024			
QUARTER	MEMBER GROWTH NET GOAL	MEMBER GROWTH ACTUAL	DROPPED MEMBERS ACTUAL (including transfers)
JULY/AUG/SEPT	2466	5,933	872
OCT/NOV/DEC	836	1,097	1,577
JAN/FEB/MAR	938	1,753	226
APR/MAY/JUNE	430	315	365

GOALS AND ACTUAL NEW CLUBS CUMULATIVE



GOALS AND ACTUAL MEMBERS CUMULATIVE



DROPPED CLUBS: 15	1,094 CLUBS OF 1,222 ADDED 1 OR MORE NEW MEMBERS	GENDER DISTRIBUTION	
		MALE 30,401 (65.95%) FEMALE 15,680 (34.02%) NON BINARY 0 (0.00%) PREFER NOT TO ANSWER 14 (0.03%)	
DROPPED MEMBERS		CLICK HERE FOR CUMULATIVE MEMBERSHIP DATA	TOTAL FAMILY UNIT MEMBERS 5,400
DECEASED 81 CLUB CANCELLED 60 OTHER 2,900 TOTAL 3,041	FAMILY MEMBERS PAYING HALF DUES 3,224		